

P/2016/00213  
Received 12/02/2016

SECTION  
AA

2x2.0x2m deep soakaway. Fill with proprietary plastic crates with minimum 95% void ratio. Install in accordance with manufacturers guidelines. Wrap in permeable geotextile membrane. Min bottom level 5.70m approx

2x1.6x2m deep soakaway. Fill with proprietary plastic crates with minimum 95% void ratio. Install in accordance with manufacturers guidelines. Wrap in permeable geotextile membrane. Min bottom level 8.60m approx

Outfall to existing ditch. Provide proprietary mesh vermin control to end of pipe. Outfall invert level 7.10m

Outfall to existing ditch. Provide proprietary mesh vermin control to end of pipe. Outfall invert level 8.15m

2x1.6x2m deep soakaway. Fill with proprietary plastic crates with minimum 95% void ratio. Install in accordance with manufacturers guidelines. Wrap in permeable geotextile membrane. Min bottom level 8.60m approx

Outfall to existing ditch. Provide proprietary mesh vermin control to end of pipe. Outfall invert level 10.15m

Deepen existing ditch where shaded to be at least 300mm below new incoming pipes and re-grade as necessary

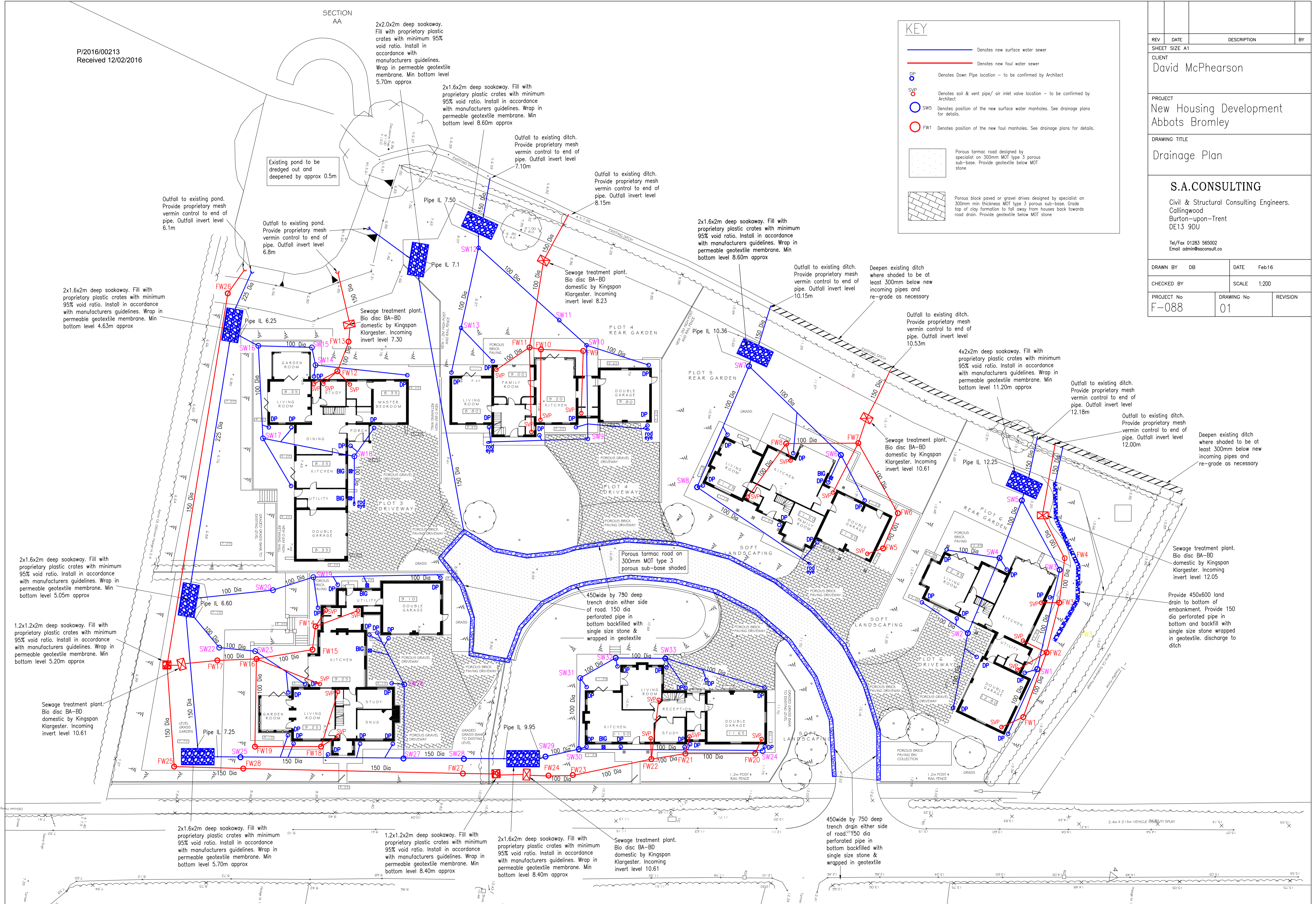
**KEY**

- Denotes new surface water sewer
- Denotes new foul water sewer
- DP Denotes Down Pipe location - to be confirmed by Architect
- SVP Denotes soil & vent pipe/ air inlet valve location - to be confirmed by Architect
- SW5 Denotes position of the new surface water manholes. See drainage plans for details.
- FW1 Denotes position of the new foul manholes. See drainage plans for details.

Porous tarmac road designed by specialist on 300mm min thickness MOT type 3 porous sub-base. Provide geotextile below MOT stone

Porous brick paved or gravel drives designed by specialist on 300mm min thickness MOT type 3 porous sub-base. Grade top of clay formation to fall away from houses back towards road drain. Provide geotextile below MOT stone

REV	DATE	DESCRIPTION	BY
SHEET SIZE A1			
CLIENT David McPhearson			
PROJECT New Housing Development Abbots Bromley			
DRAWING TITLE Drainage Plan			
S.A. CONSULTING Civil & Structural Consulting Engineers. Collingwood Burton-upon-Trent DE13 9DU Tel/Fax 01283 565002 Email admin@saconsult.co			
DRAWN BY DB		DATE Feb 16	
CHECKED BY		SCALE 1:200	
PROJECT No F-088	DRAWING No 01	REVISION	



2x1.6x2m deep soakaway. Fill with proprietary plastic crates with minimum 95% void ratio. Install in accordance with manufacturers guidelines. Wrap in permeable geotextile membrane. Min bottom level 5.70m approx

1.2x1.2x2m deep soakaway. Fill with proprietary plastic crates with minimum 95% void ratio. Install in accordance with manufacturers guidelines. Wrap in permeable geotextile membrane. Min bottom level 8.40m approx

2x1.6x2m deep soakaway. Fill with proprietary plastic crates with minimum 95% void ratio. Install in accordance with manufacturers guidelines. Wrap in permeable geotextile membrane. Min bottom level 8.40m approx

Sewage treatment plant. Bio disc BA-BD domestic by Kingspan Klargester. Incoming invert level 10.61

450wide by 750 deep trench drain either side of road. 150 dia perforated pipe in bottom backfilled with single size stone & wrapped in geotextile

Sewage treatment plant. Bio disc BA-BD domestic by Kingspan Klargester. Incoming invert level 12.05

Provide 450x600 land drain to bottom of embankment. Provide 150 dia perforated pipe in bottom and backfill with single size stone wrapped in geotextile. discharge to ditch